

# Thompson Tribune

East Stroudsburg Veterinary Hospital

January—March 1st  
Quarter

Volume 2, Issue 1

Author: Bradley Mark, Nursing Team

Edited by: The Entire Veterinary Team

## Final Edition of Who's Who at ESVH

In the final article of our series "Who's Who at ESVH," we will feature our newest employee, Catherine Farro who started on February 2nd in the capacity of Kennel Supervisor, and last but not least, Dr. Clair Thompson.

Catherine Farro joined our team on February second of this year as our Kennel Supervisor. Cathy comes to us with previous kennel experience. Prior to her employment here, she was the ranch director at Camp Speers in Dingman's Ferry. She also was the stable manager for a stable in Bushkill. Cathy has a great love for horses, but really had an interest in veterinary medicine ever

since she was little. She grew up with dogs her whole life. Cathy lives with her husband, John, her daughter Felicia (15), and her son A.J. (13). Together they own a German Shepherd named Jen, a cat named Simba, and a 5 year old horse named Takoda. We welcome Cathy to our team.

Dr. Clair Thompson's love for veterinary medicine started out when he was working at a reptile zoo. He gave talks and shows with alligators and snakes. He attended college at Delaware Valley and during his third year he received early acceptance to the University of Penn veterinary school. He graduated in 1991 (not before

meeting his wife and co-owner of ESVH Dr. Sammie Thompson). Once graduating veterinary school, Dr. Clair wanted to work with exotic animals. His desire to pursue that career ended quickly when he developed an allergy to bird dander. Hence, the reason Henry now resides here at the office. Dr. Clair worked locally for 3 years before he started his veterinary housecall service in 1996. Dr. Clair did annual wellness examinations as housecalls and would use this office for surgeries when Dr. Tartaglione was closed. In July of 2000, Dr. Clair bought this practice from Dr. Tartaglione and began working here full time. And the rest, as they say, is history.

## Arthritis

Arthritis is a complex condition involving inflammation of joints. There are many causes of arthritis in pets. In most cases, the degree of arthritis is related to the age of the animal. The most common type of arthritis is osteoarthritis which is

also known as degenerative joint disease. This can be primary, the cause of which is unknown and secondary, following conditions involving joint instability leading to damage of the subchondral bone that line the joints. Treatment

depends on the cause of the arthritis. Corticosteroids, non-steroidal anti-inflammatories, and nutraceuticals are helpful in the management of arthritis. Contact a member of our Healthcare Team to find out more about the treatment of arthritis.

### Inside this issue:

Canine Bloat	2
Treatment of GDV	2
Bone Disease of Growing Dogs	2
Wobbler Syndrome	3
Luxating Patella	3
Degenerative Joint Disease	3
Staff Stuff	4

### Special points of interest:

- Gastric Dilatation and Volvulus
- Treatment of Gastric Dilatation and Volvulus
- Bone Disease in Growing Dogs
- Cervical Stenosis
- Luxating Patella
- Degenerative Joint Disease

# Gastric Dilatation and Volvulus (GDV or Canine Bloat)

Gastric Dilatation and Volvulus (GDV) is a life threatening disorder most commonly seen in large, deep-chested dogs. GDV is probably one of the most serious non-traumatic conditions. The term refers to a gas-filled stomach (bloat) that then twists upon itself. It is a medical emergency that usually requires surgery to correct. The definite cause of GDV is still unknown. The most common history is a large breed dog that eats or drinks rapidly and then exercises. In recent studies, stress was found to be a contributing factor to GDV.

Sometimes the condition progresses no further than simple dilatation (bloat) but in other instances the huge, gas-filled stomach twists upon itself so that both entrance and exit (cardia and pylorus) are occluded. Veterinary help is needed without delay. Dogs such as Great Danes, Saint Bernards, Weimaraners, Irish Setters, Gordon Setters, Standard Poodles, Basset Hounds, Doberman Pinschers, and Old English Sheepdogs are breeds most prone to GDV. GDV causes the following conditions: Vomiting and retching are very important signs of

GDV. The distended stomach pushes the rib cage so that the dog appears swollen or "bloated". This is most obvious on the left side and gentle tapping of the swelling just behind the last rib often produces hollow, drum-like sounds. The enlarged stomach presses on the diaphragm and breathing becomes labored. The swollen stomach also presses on the larger blood vessels in the abdomen and circulation is seriously compromised, resulting in shock. Eventually, the dog will collapse from lack of blood and oxygen to the tissues.

# Treatment of Gastric Dilatation and Volvulus (GDV)

GDV is a life threatening condition and veterinary assistance must be sought immediately. It is imperative that the pressure on the stomach wall and internal organs is reduced as soon as possible. The veterinarian may first attempt to pass a stomach tube. If this is not possible due to twisting of the stomach, a large bore needle may be passed through the skin into the stomach to relieve the pressure in the stomach. Once the patient has been stabilized, the stomach

must be returned to its proper position. This involves major abdominal surgery and may be delayed until the patient is able to undergo anesthesia. The primary goal of surgery is to return the stomach to its normal position, remove any dead or dying stomach tissues and help prevent future GDV. The best treatment for GDV is prevention. Gastropexy (surgical attachment of the stomach to body wall) is the most effective means of prevention. This does

not prevent dilatation (bloat) but does prevent twisting (volvulus) of the stomach in the majority of cases. Contact our office for some other suggestions on preventing GDV.

**Careful attention to diet, feeding and exercise regimens help to prevent GDV. Contact our office for some suggestions at (570) 421-0931**

# Bone Disease of Growing Dogs

There are many causes of limping and lameness in young dogs. Some of the most common are: Hip Dysplasia, Elbow Dysplasia, Fractured Coronoid Process, Panosteitis, Osteochondrosis Dissecans, and Hypertrophic Osteodystrophy. **Hip Dysplasia** is an improper formation of the hip joints. **Elbow Dysplasia** is



Hip Displasia is Common in Large Dogs

a lack of fusion of the top of the ulna at the rear point of the elbow. Secondary arthritis is very common. **Fractured Coronoid Process** is the fracture of a small bony protrusion on the radius within the elbow joint. **Panosteitis** is an inflammation on the surface of the long bones and is common in

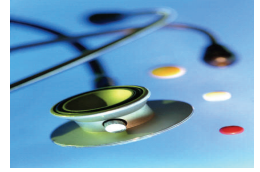
large breed puppies. **Osteochondrosis dissecans** is a defect in the smooth cartilage surface within one or more joints. **Hypertrophic Osteodystrophy** is inflammation in the growth plates of the long bones. All of these conditions are painful and can be treated with medications or surgery. Early intervention and treatment is key to a good prognosis. Treatment is time consuming and should begin early.

## Cervical Stenosis (Wobbler Syndrome)

Cervical stenosis is also known as cervical vertebral instability, cervical spondylopathy or Wobbler syndrome. It is due to the compression of the spinal cord, usually at the base of the neck. Although the spinal cord compression occurs in the neck, the hind legs may sometimes be affected first. The mildest form of cervical stenosis results in stumbling. This can progress to a wobbly gait, hence the term “Wobbler Syndrome”. In severe cases there may be sudden total paralysis of all four limbs. It may be due to instability of one or more of the

vertebrae at the base of the neck or it may be due to deformity of these vertebrae, which causes pressure on the spinal cord. This damages the nerves transmitting information to the limbs and thus weakness or paralysis can occur. This condition is prevalent in larger breed dogs. Cervical Stenosis is diagnosed through breed, clinical signs, and radiographs. Definitive diagnosis is obtained through a myelogram. Myelography is the process of injecting a dye into the spinal canal and then performing radiographs of the spine. The area of

pressure is indicated by a thinning of the column of dye at the pressure points. Treatment consists of anti-inflammatory drugs and pain medications, but the greatest chance of success lies with surgery, particularly if performed early. If there is weakness in the spine, it is possible for the condition to recur, but it's rare.



Wobbler Syndrome common in large dog

## Luxating Patella

The patella or knee cap is normally located in the center of the knee joint. The term *luxating* means “out of place” or dislocated. Therefore, a luxating patella is a knee cap that moves out of its normal location. Some dogs can tolerate this problem for many years, some for all of their lives. However, this weakness in the knee predisposes the knee to other injuries, especially torn cruciate ligaments. With advancing age, arthritic changes may take place in the

joint causing pain. Surgery should be performed if your dog/cat has a persistent lameness or if other knee injuries occur secondary to the luxating patella. If the surgery is performed before arthritis occurs, the prognosis is excellent. Your dog/cat should regain full use of its leg. How-

ever, if arthritis has already occurred, your dog will often experience intermittent pain in the joint. Anti-inflammatory medications are used to ensure your pet remains pain free. Stop by our office to see our model knee, and a member of our Health-care Team can show you a luxating patella.

**Luxating Patella if untreated can lead to bigger problems such as a torn cruciate ligament.**

## Degenerative Joint Disease

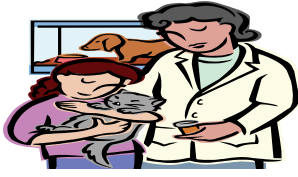
As our pets age, the tissues lining the bones and joints may deteriorate and degenerate. Degenerative Joint Disease (DJD) describes chronic arthritis which is a gradual deterioration of articular cartilage within the joints. DJD can follow a number of joint diseases including infection and surgery.



Nutraceuticals such as Cosequin help with DJD.

It also occurs from excessive weight and obesity. The smooth resilient cartilage degenerates and becomes brittle and may actually split from the bone and become detached within the joint. Most of the damage caused by DJD is irreversible. Fortunately, new products are available that can slow the

progress of the disease and promote healing. In addition, modern analgesics can effectively control pain with few side effects. Most dogs suffering from DJD are overweight. It is imperative that your pet's weight should be monitored and reduced if necessary. Nutraceuticals (dietary supplements) play an important role in managing this disease. Call our office for some more information on the treatments we offer.



## East Stroudsburg Veterinary

353 Prospect Street  
East Stroudsburg, PA 18301  
Phone: 570-421-0931  
Fax: 570-421-3178  
Website: [www.esvh.com](http://www.esvh.com)

**We're on the Web!**  
[www.esvh.com](http://www.esvh.com)

### ● Celebrating Healthy Pets Through Wellness

## “Staff Stuff”

Dr. Sammie went to Haiti this quarter for a missions trip with her church. She presented a power point presentation when she returned. She said that the whole experience was very rewarding. She did manage to neuter some dogs while she was there, but we never saw any pictures of her actually working...

Dr. Sammie, Rebecca and Kristi attended the North American Veterinary Conference in Orlando, FL. They brought back with them a wealth of knowledge and gave presentations on Feline Panleukopenia, Caesarian Sections, Feline Diabetes, and Cardiopulmonary Cerebral Resuscitation. They also gave a presentation on PennHip Radiographs which is a new way to diagnose and help reduce canine hip dysplasia. They also managed to enjoy the warm weather over some nice lunch breaks.

The entire staff will be attending a conference on Canine Lyme Disease in April. Many of us have attended this lecture before, but since we have such an endemic area of Lyme Disease, we felt it was important to learn about any updates in the treatment of this debilitating disease.

Vyolet is leaving in April to attend a conference on canine message therapy in Ohio. This is the first step in her certification to become a canine message therapist.

Well, our staff Christmas party is a little late this year. We will be going on a dinner cruise in New York on April 23rd. So you'll have to wait until our next newsletter to find out the juicy details of this excursion.

Cathy celebrated her birthday in January and Kristi enjoyed hers in February. Carol

celebrated her 4 year anniversary here. Carol, our Nursing Team Supervisor, is such an integral part of the day to day operation of this hospital and we thank her and congratulate her on four years with us. Personally speaking she makes every day of work enjoyable and has a compassion for the work she does and the animals she treats that is extraordinary.

